

5

B^b Gm E^b/G Gm B^b7 A^b B^b

T 6 6 6 6 x x x x x 6 4 3 4 4 4 3 3 4 4 4 6 x x
A 7 7 7 7 x x x x x 3 3 3 3 3 3 3 3 3 3 3 3 x x
B 8 8 8 8 x x x x x 5 5 5 5 5 5 5 5 5 5 5 5 x x

sl.

7

B^b Gm E^b/G Gm B^b7 A^b B^b

T 6 6 6 6 x x x x x 6 4 3 4 4 4 3 3 4 4 4 6 x x
A 7 7 7 7 x x x x x 3 3 3 3 3 3 3 3 3 3 3 3 x x
B 8 8 8 8 x x x x x 5 5 5 5 5 5 5 5 5 5 5 5 x x

sl.

9

B^b Gm E^b/G Gm B^b7 A^b B^b

T 6 6 6 6 x x x x x 6 4 3 4 4 4 3 3 4 4 4 6 x x
A 7 7 7 7 x x x x x 3 3 3 3 3 3 3 3 3 3 3 3 x x
B 8 8 8 8 x x x x x 5 5 5 5 5 5 5 5 5 5 5 5 x x

sl.

T 10 10 10 x x x x x 8 8 7 (7) 8 8 8 8 7 7 8 8 8 8 10 x x
A 8 8 8 x x x x x 10 8 8 5 5 5 5 5 6 6 6 6 8 8 x x
B 8 8 8 x x x x x 10 8 8 5 5 5 5 5 6 6 6 6 8 8 x x

sl.

11

B \flat Gm E \flat /G Gm B \flat 7 A \flat B \flat

T 6 6 6 6 x x x x x 6 4 3 4 4 4 3 3 4 4 4 6 x x
A 7 7 7 7 x x x x x 3 3 3 3 3 3 3 3 3 3 3 3 x x
B 8 8 8 8 x x x x x 5 5 5 5 5 5 5 5 5 5 5 5 x x

sl.

13

B \flat Gm E \flat /G Gm B \flat 7 A \flat B \flat

T 6 6 6 6 x x x x x 6 4 3 4 4 4 3 3 4 4 4 6 x x
A 7 7 7 7 x x x x x 3 3 3 3 3 3 3 3 3 3 3 3 x x
B 8 8 8 8 x x x x x 5 5 5 5 5 5 5 5 5 5 5 5 x x

sl.

15

B \flat Gm E \flat /G Gm B \flat 7 A \flat B \flat

T 6 6 6 6 x x x x x 6 4 3 4 4 4 3 3 4 4 4 6 x x
A 7 7 7 7 x x x x x 3 3 3 3 3 3 3 3 3 3 3 3 x x
B 8 8 8 8 x x x x x 5 5 5 5 5 5 5 5 5 5 5 5 x x

sl.

sl.

17

B^b Gm E^b/G Gm B^b7 A^b B^b

mf

T 6 6 6 6 x x x x x 6 4 3 4 4 4 3 3 4 4 4 4

A 7 7 7 7 x x x x x 3 3 3 3 3 3 3 3 3 3 3 3

B 8 8 8 8 x x x x x 5 5 5 5 5 5 5 5 5 5 5 5

mf

T 10 10 10 x x x x x 8 8 7 (7) 8 8 8 8 7 7 8 8 8 8

A 8 8 8 x x x x x 10 8 7 5 5 5 5 5 5 6 6 6 6

B 8 8 8 x x x x x 10 8 7 5 5 5 5 5 5 6 6 6 6

B Chorus

19

B^b/E^b N.C.(F) F_{sus2}

Gtrs I, II
let ring-----| let ring-----|

T 7 7 7 7 10 10 x 10 10 10 10

A 8 8 8 8 8 8 x 8 8 8 8

B 6 6 6 6 5 5 x 8 8 8 8

sl.

21

B^b/E^b C5

let ring-----| let ring-----| let ring-----|

T 7 7 7 7 7 8 8 7 8 4 5 5 5 5 x x x 5

A 8 8 8 8 8 8 8 8 8 4 5 5 5 5 x x x 5

B 6 6 6 6 6 8 8 8 8 2 3 3 3 3 x x x 3

sl.

23

B^b/E^b N.C.(F) F_{sus2}

let ring-----| let ring-----| let ring-----| let ring-----|

T 7 7 7 7 7 7 10 10 x 10 x 10 10 8

A 8 8 8 8 8 8 8 8 x 8 x 8 8 8

B 6 6 6 6 6 6 5 5 x 8 x 8 8 8

sl.

25

B \flat /E \flat 1. F

let ring-----|

Gtr II

T

A

B

Gtr I

T

A

B

28

C Pre-Verse 2

B \flat Gm E \flat /G Gm B \flat 7 A \flat B \flat /A \flat

Gtr II *fff*

T

A

B

sl.

Gtr I *fff*

T

A

B

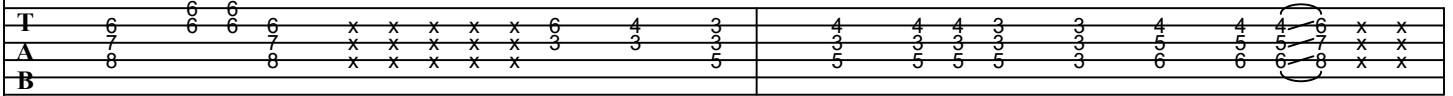
[illegible]

E InterludeB⁷

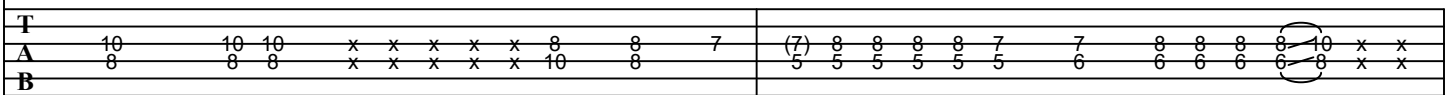
Gm

E⁷/G

Gm

B⁷A^bB⁷Gtr I *fff*

sl.

Gtr II *fff*

sl.

Gtr III *fff*

H

sl.

36

B^b Gm E^b/G Gm B^b7 A^b B^b 3x

T

A

B

sl.

H sl.

Gtr IV

T

A

B

sl.

F 3rd ChorusB^b/E^b

N.C.(F)

38

Gtrs I, II *mf*

T

A

B

sl.

B^b/E^b

C5

40

T

A

B

sl.

B \flat /E \flat F

42

Gtr II

T

A 7 7 7 7 7

B 6 6 6 6 6

Gtr I

T

A 10 10 10 10 10 10 10 10 10 10 10 10 10 10 10 10

B 8 8 8 8 8 8 8 8 8 8 8 8 8 8 8 8

G Interlude II

N.C.

45

Gtrs V, VI *fff*

Gtrs III, V, VI

T

A 11 9 11 9

B 8 8 7 8 8 7 8 9 x

10 12 12 13 14

8 10 10 6 7 8

sl. *sl.*

H ChorusB \flat /E \flat

N.C.(F)

47

Gtrs I, II

T

A 7 7 7

B 6 6 6

7 10 10 x 10 10 10 10

5 8 8 x 8 8 8 8

sl.

B \flat /E \flat

C5

49

T

A 7 7 7 7 7

B 6 6 6 6 6

8 8 7 8

4 5 5 5 5 x x x 5

4 5 5 5 5 x x x 5

2 3 3 3 3 x x x 3

sl.

The image shows a musical score for guitar and bass. The top staff is for guitar (Gtr I) and the bottom staff is for bass (Gtr II). The key signature is B-flat major (two flats) and the time signature is 4/4. The score is divided into two systems. The first system has a tempo marking of 53. The guitar part features a melodic line with a mix of eighth and sixteenth notes, while the bass part provides a steady eighth-note accompaniment. The second system continues the same musical ideas. The guitar part includes a section with a 'V' marking, possibly indicating a vibrato or a specific technique. The bass part also includes a section with a 'V' marking. The score is written for a guitar and a bass, with the guitar part on the top staff and the bass part on the bottom staff. The key signature is B-flat major (two flats) and the time signature is 4/4. The score is divided into two systems. The first system has a tempo marking of 53. The guitar part features a melodic line with a mix of eighth and sixteenth notes, while the bass part provides a steady eighth-note accompaniment. The second system continues the same musical ideas. The guitar part includes a section with a 'V' marking, possibly indicating a vibrato or a specific technique. The bass part also includes a section with a 'V' marking.

I Outro

56

B^b Gm E^b/G Gm B^b7 A^b B^b

Gtr I *fff*

T 6 6 6 6 x x x x x 6 4 3 4 4 4 3 3 4 4 4 6 x x
A 7 7 7 7 x x x x x 3 3 3 3 3 3 5 5 5 7 x x
B 8 8 8 8 x x x x x 5 5 5 5 3 6 6 6 8 x x

sl.

Gtr II

T 10 10 10 x x x x x 8 8 7 (7) 8 8 8 8 7 7 8 8 8 8 10 x x
A 8 8 8 x x x x x 10 8 5 5 5 5 5 5 6 6 6 6 8 x x
B 8 8 8 x x x x x 10 8 5 5 5 5 5 5 6 6 6 6 8 x x

sl.

[illegible]